

### Garden of Yesterday

The Garden of Yesterday is a typical Ohio kitchen garden from the 1840s when the Gantz farmhouse was built. Farm families planted herbs with fruits, vegetables and possibly ornamentals in such a garden.

This garden demonstrates herbs with multiple uses, heirloom vegetables and old fruit varieties. Herbs used in cooking also may have medicinal and dye purposes. The primary vegetables grown were those that could be preserved and stored for winter. The garden does not reflect the large crops that would have been necessary to feed a farm family. Instead, this garden includes a small quantity of many vegetables. Vegetables such as corn, squash and pumpkins, which require a lot of space, would not have been planted in a kitchen garden.

Fences surrounded gardens of this era to keep out farm animals. The brick and gravel walks are uncharacteristic for a farm garden, but are incorporated to make the garden accessible to all visitors.

### GANTZ LABYRINTH

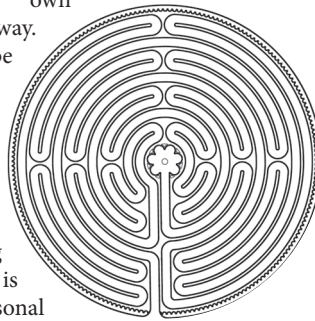
Labyrinths are an ancient meditation tool that have been used throughout the world for more than 4,000 years. Unlike a maze, the circular paths have one entrance point that leads to its center with no dead-ends. The Gantz labyrinth is surrounded by an herbal grove including American Beech, Sweet Bay Magnolia and Sassafras.

The classic 11-circuit labyrinth design was first laid on the floor of the Chartres Cathedral in northern France in 1201. The rosette in the center has six petals and is often a stopping point for users to stand, sit or kneel and reflect. The Chartres labyrinth is made up of 11 concentric circles connected by 34 turns, 28 of which are 180-degree switch-backs.

### WALKING THE LABYRINTH

Walking the labyrinth represents a journey to one's spiritual center and then back into the world. There is no right or wrong way to walk a labyrinth's path, so do what feels natural. Proceed at your own pace. Lose your way.

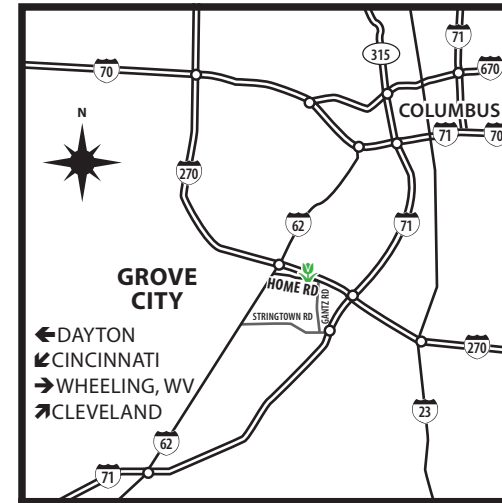
Pass others and be passed. You may want to stop, especially at the switch-back turns. Sit or lie down, with or without shoes, and stay as long as you'd like. This is intended to be a personal and reflective experience that mimics the twists and turns of life.



### RAIN GARDEN

Rain gardens are strategically landscaped in low lying areas and catch polluted runoff from rooftops, driveways, sidewalks, roads and other impervious surfaces. Deep-rooted, water- and drought-tolerant plants filter storm water through the roots and soil so groundwater is cleaner as it enters local streams. Additionally, rain gardens minimize flooding, reduce the amount of storm-water runoff and provide habitats for wildlife.

### THE GARDENS AT GANTZ FARM



2255 Home Road  
Grove City, OH 43123



City of Grove City  
Parks and Recreation Department

Office: 3226 Kingston Ave.

614-277-3050

GroveCityOhio.gov

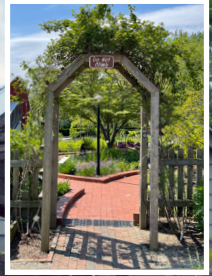
f @GroveCityParks

Interested in volunteering at the  
Gardens at Gantz Farm?

Call 614-871-6323.

# The Gardens at Gantz Farm

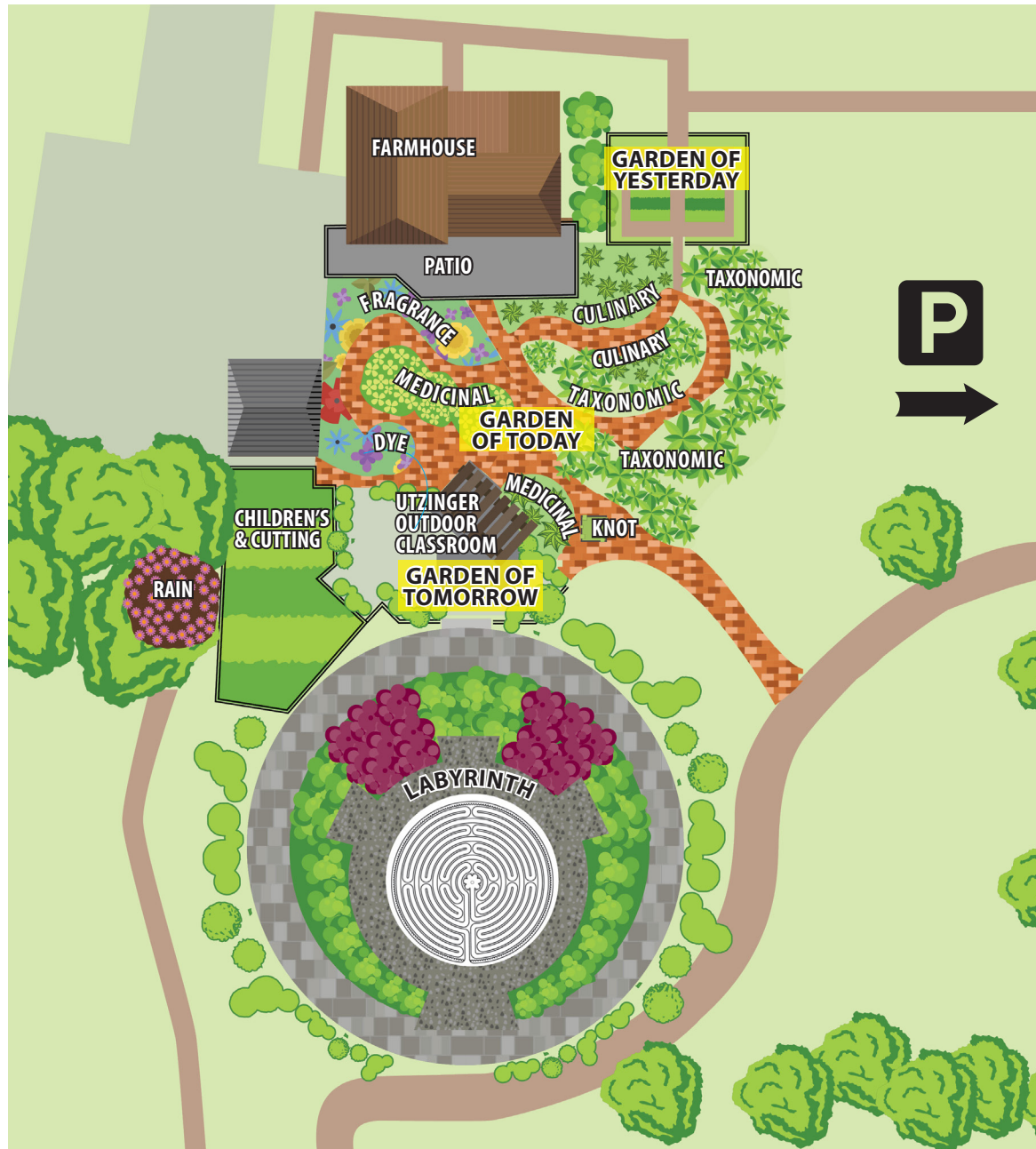
## A SELF-GUIDED TOUR



2255 Home Road  
Grove City, Ohio 43123  
614-871-6323  
GroveCityOhio.gov



# GARDENS AT GANTZ FARM



## GARDEN OF TODAY

Forms and materials change in the Garden of Today. Curving walls and walks of wire-cut brick contrast with the old brick of the Garden of Yesterday and rectilinear forms of the Garden of Tomorrow. The Garden of Today, representing herb garden trends from the second half of the 20th century, is divided into theme gardens that emphasize the uses of plant products and the relationships between plants. A single herb may have several uses but is categorized here by its most common use. Some woody plants have herbal uses and are included for shade and visual interest.

### CULINARY GARDEN

Most people today associate herbs with culinary uses. Herbs impart distinctive flavors to foods and beverages because they contain essential oils. Fresh herbs can provide flavor during the summer, and dried herbs are convenient for winter use. The time for harvesting depends on which part of the plant contains the essential oils: the flower, leaves, seeds, stems or roots.

### CHILDREN'S AND CUTTING GARDEN

The children's and cutting garden is maintained to accommodate group activities and educational programs. It provides fresh and dried materials in quantity for culinary, dye and fragrance uses, and for making herbal wreaths and dried arrangements.

### DYE GARDEN

Many plants contain pigments capable of imparting color to natural fibers such as cotton, wool, linen and silk. Colors obtained from plants vary but are most often yellow, orange, green and brown. Fewer plants produce blue and red dye pigments. Natural dyes often produce subtle rather than intense color. Depending on the plant, the pigment may be in the flower, leaves, fruit or roots. The plant is boiled to extract the pigment into a solution. A mordant material that combines with the natural pigment to form an insoluble color may be used to make colors more permanent.

### FRAGRANCE GARDEN

The fragrance garden appeals to the senses of sight and smell. Some essential oils in herbs provide delightful fragrances. Such fragrances are used in perfumes, colognes, bath oils and potpourri. Many herbs grown for their fragrance are ornamental and attract bees and butterflies.

## KNOT GARDEN

Low-growing plants capable of withstanding frequent pruning are well-suited for herbal knot gardens. Plants with different colors of foliage are used to produce geometric patterns with mulch materials of varying colors and textures.

## MEDICINAL GARDEN

Historically, the first uses of herbs were medicinal. Many plants are able to affect human physiology because of the unique chemicals they contain. In many cases, a small amount of these active ingredients is effective, and a larger amount may be dangerous. This garden contains herbs with histories of medicinal uses. It is important to remember that self-medication with plants can be very dangerous.

## TAXONOMIC GARDEN

A taxonomic garden groups plants in the same botanical family. Herbs represent many botanical families. Some families have one representative in this garden because they have few members that are herbs. Others, such as the mint family, include many herbs. Not all families that include herbs or all herb members are included.

## GARDEN OF TOMORROW

Herbs in the Garden of Tomorrow are planted for the functions they perform in creating a landscape. Their sensory effects create a landscape of the future. The plants serve as focal points, ground cover and other roles. Many are grown in containers.

Forms and materials contrast with the Garden of Today. Brick pavers carry out the red color scheme of the other gardens in a contemporary form. Decks, trellises and planter boxes mimic the rectangular and triangular shapes popular in many contemporary landscapes.

The garden deck is named The Utzinger Outdoor Classroom in memory of Dr. James D. Utzinger, Ohio State University professor and chairman of the steering committee who conceived the Gardens at Gantz Farm.